

Panasonic

BUSINESS

360-degree Live Camera
AW-360C10

360-degree Live Camera Head

AW-360B10

360-degree Live Camera Base Unit



**360-degree Uncompressed
Video 4K Output
(2:1 Equirectangular format)**



Uncompressed 4K (3840 x 2160) Output Produces High Quality Immersive Video

This system generates 2:1 equirectangular format 360-degree video by stitching the output of four cameras. It can give you the sense of being there at a variety of scenes, such as live broadcasts of sports, concerts, and other stadium events.



360-degree Live Camera Base Unit
AW-360B10

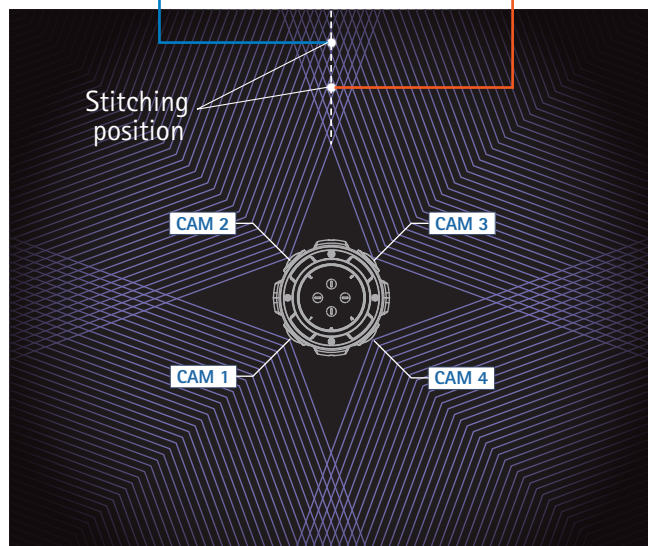


360-degree Live Camera Head
AW-360C10

High-precision Real-time Active Stitching Function

High-precision real-time active stitching function enables the camera to continuously change the stitching position by automatically detecting a subject at the seam. It can generate seamless natural-looking video.

<Real-time Active Stitching Function>



Uncompressed 4K (3840 x 2160) Output



4K (3840 x 2160) output produces high quality video so fully immersive that you will feel like you are actually there. 4K/30p high-definition 360-degree video stitched together and generated with low latency enables video transmission in real-time.

<Lens>



Exposure and White Balance Coordinated Control Function

The master camera automatically controls the exposure and white balance of the images by aligning with the 4-camera system without external connection to a PC, realizing incredible operability that produces natural images every time (factory setting: master camera mode (CAM2)).



AE/ATW
Coordinated Control



Examples of Shooting Locations

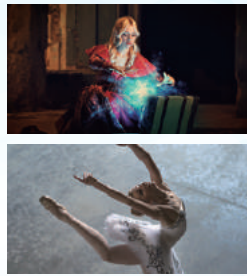
Live Sports Broadcasting



Video so incredible as if you are in the stands watching it live

Shooting a wide variety of sports in a multitude of locations, such as stadiums during baseball or soccer games, the ring of a martial arts bout or the court for tennis or basketball is possible. You can capture the action as if you were a spectator in the stands or get up close for an athlete's point of view. Great for live broadcasting or to capture recorded content for later broadcast.

Live Event Broadcasting

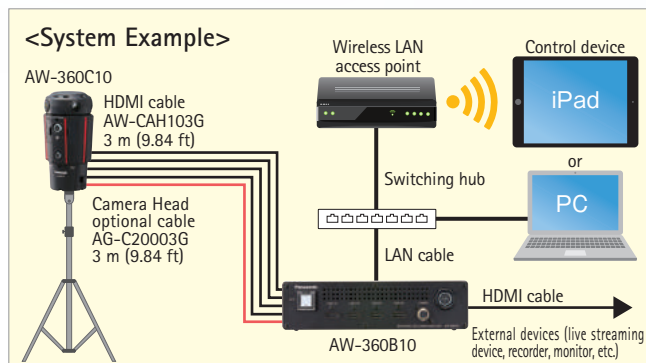


Images that give you a VIP-like view of the show

The 360-degree Live Camera can easily take in the entire expanse of a stage or hall during music, dance, theater or any other type of live performance. You can capture an even more dynamic performance by installing multiple cameras throughout the venue and switching the viewpoint as you see fit.

Network Camera Control

Capable of monitoring and controlling remotely with a PC or an iPad via network, this system enables swift 4K production workflow.



Supported OS	Windows	<ul style="list-style-type: none"> Windows 7 (32 bit/64 bit) Professional SP1, Windows 10 (32 bit/64 bit) Pro Web Browser: Google Chrome <Internet Explorer is not supported>
	Mac	<ul style="list-style-type: none"> macOS 10.12 Web Browser: Safari 10
Supported Web Browser	<ul style="list-style-type: none"> iPhone / iPad / iPod touch iOS 10.2 Web Browser: Standard Browser 	

●HDMI, High-Definition Multimedia Interface and HDMI logo are either registered trademarks or trademarks of HDMI Licensing Administrator, Inc., in the United States and other countries. ●Microsoft®, Windows®, Windows® XP, Windows® 7, Windows® 8, Windows® 8.1, Windows® 10 and Internet Explorer® are either registered trademarks or trademarks of Microsoft Corporation in the United States and other countries. ●Apple, Mac, OS X, iPhone, iPod Touch, iPad and Safari are registered trademarks of Apple Inc., in the United States and other countries. ●Google Chrome is either a registered trademark or trademark of Google Inc.

Reliable Live Broadcasting

Easy to install and remove, the 360-degree Live Camera Head is equipped with an HDMI cover that prevents unexpected cable removal*, and the 360-degree Live Camera Base Unit has a switch cover that prevents accidental operation. The camera can be operated in temperatures from 0°C (32°F) to 40°C (104°F) to ensure excellent reliability that meets the demands of professional video producers in live broadcast situations where failure is not an option.

*When using AW-CAH103G only

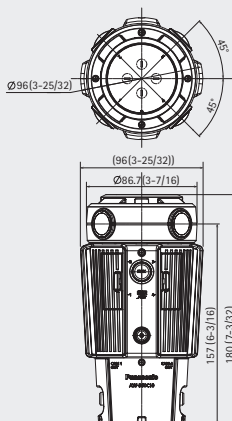


Dimensions

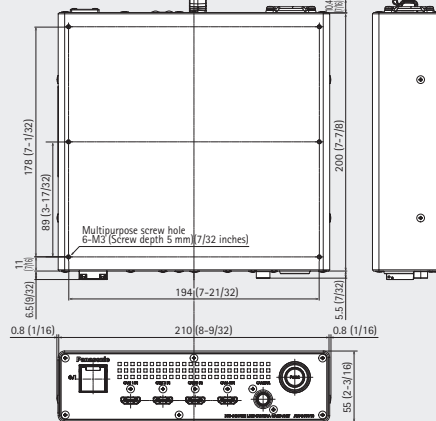
Unit: mm (inches)

Accessories (sold separately)

AW-360C10



AW-360B10



HDMI Cable
AW-CAH103G
 3 m (9.84 ft)

Contains 4 cables in AW-CAH103G

Camera Head Optional Cable
AG-C20003G
 3 m (9.84 ft)

<Notes on Power Supply>

360-degrees Live Camera Base Unit AW-360B10 does not include AC adaptor. Please prepare a 4 pin XLR 12 V adaptor that can provide the rated power consumption (43.4 W) of the unit.

■ Specifications

AW-360C10 [360-degree Live Camera Head]

General	Power Requirements	DC 12 V (power supplied by the AW-360B10 Base Unit)	
	Power Consumption	13.8 W	
	Operating Temperature	0 °C to 40 °C (32 °F to 104 °F)	
	Operating Humidity	10% to 80% (no condensation)	
	Storage Temperature	-10 °C to 60 °C (14 °F to 140 °F)	
	Storage Humidity	30% to 80%	
	Weight	Approx. 630 g (1.39 lb) (excluding lens caps)	
	Dimensions (W x H x D)	96 mm x 180 mm x 96 mm (3-25/32 inches x 7-3/32 inches x 3-25/32 inches) (excluding protrusions and lens caps)	
Camera Unit	Image Sensors	1/2.3-type MOS x 4	
	Total Number of Pixels	12.76 megapixels x 4	
	Lens	Fixed focal length Super Fisheye x 4	
		F-number	F2.4
		Focal Length	f=1.83 mm
		Focus Distance	Approx. 0.5 m (19-11/16 inches) to ∞
	White Balance	Auto, Manual, WB set	
	Exposure	Auto, Manual Shutter: 1/30 to 1/12000 sec. (when setting NTSC in Capture Mode) 1/25 to 1/12000 sec. (when setting PAL in Capture Mode) Gain: 0 to 30 dB	
	Minimum Illumination	6 lx (30 dB, 1/30, when setting NTSC in Capture Mode) 6 lx (30 dB, 1/25, when setting PAL in Capture Mode)	
	Card	SD card	micro SD card slot x 4 (for firmware update)
Input / Output	Video	Output	CAM1 OUT, CAM2 OUT, CAM3 OUT, CAM4 OUT terminals (connecting to AW-360B10)
	Audio	Output	CAM1 OUT, CAM2 OUT, CAM3 OUT, CAM4 OUT terminals (LPCM) (connecting to AW-360B10)
		Input	Built-in mic x 4
	External Terminals	Connector	20 pins dedicated interface (connecting to AW-360B10)

AW-360B10 [360-degree Live Camera Base Unit]

General	Power Requirements	DC 12 V (11.5 V to 17 V)			
	Power Consumption	43.4 W (when connecting to the AW-360 Camera Head) (including the power consumption of the Camera Head)			
	Operating Temperature	0 °C to 40 °C (32 °F to 104 °F)			
	Operating Humidity	10% to 80% (no condensation)			
	Storage Temperature	-10 °C to 60 °C (14 °F to 140 °F)			
	Storage Humidity	30% to 80%			
	Weight	Approx. 1.55 kg (3.42 lb)			
	Dimensions (W x H x D)	210 mm x 55 mm x 200 mm (8-9/32 inches x 2-3/16 inches x 7-7/8 inches)(excluding protrusions)			
Stitching Functions	Stitching Format	2:1 Equirectangular			
	Minimum Stitching Distance	Approx. 1 m (3-15/16 inches)			
Shooting Functions	White Balance	Auto, Manual, WB set			
	Exposure	Auto, Manual Shutter: 1/30 to 1/12000 sec. (when setting NTSC in Capture Mode) 1/25 to 1/12000 sec. (when setting PAL in Capture Mode) Gain: 0 to 30 dB			
Digital Video	External Output Video Signal	8 bit RGB			
Digital Audio	External Output Audio Video Signal	48 kHz/16 bit 2 ch			
Input / Output	Video	Input	CAM1 IN, CAM2 IN, CAM3 IN, CAM4 IN terminals (connecting to AW-360C10)		
		Output	VIDEO OUT terminal		
			Output format: 2160/29.97p/25.00p 1080/59.94p/50.00p/29.97p/25.00p		
		Audio	Input	CAM1 IN, CAM2 IN, CAM3 IN, CAM4 IN terminals (connecting to AW-360C10)	
	Output		VIDEO OUT terminal, 2ch (LPCM)		
	External Terminals	CAMERA Connector	20 pins dedicated interface (connecting to AW-360C10)		
		LAN	LAN terminal for IP control (RJ-45) (with auto recognition function for straight/cross cables)		
		DC IN 12 V	DC 12 V (11.4 V to 12.6 V) EIAJ Type4		
Network	Video Compression Format	Motion JPEG			
	Transfer Modes	Resolution		Frequency 59.94 Hz	Frequency 50.00 Hz
		MJPEG	1240 x 620	15 fps, 5 fps	12.5 fps, 5 fps
	Standard Protocols	IPv4: TCP/IP, UDP/IP, HTTP, HTTPS*, DHCP, DNS, SSL(TLS)* *Not supported for iPad.			
	IP Connecting Cable	LAN cable* (Category 5 or above), max.100 m *STP (Shielded Twisted Pair) is recommended.			

For more information, please visit Panasonic web site



<http://pro-av.panasonic.net/>

*Specifications are subject to change without notice.

Panasonic®

Panasonic Corporation
Connected Solutions Company

2-15 Matsuba-cho, Kadoma, Osaka 571-8503 Japan
<http://pro-av.panasonic.net/>

[Countries and Regions]

Argentina +54 11 4122 7200
Australia +61 (0) 2 9491 7400
Brazil +55 11 3889 4035
Canada +1 905 624 5010
China +86 10 6515 8828
Hong Kong +852 2313 0888
Czech Republic +421 (0) 903 447 757
Denmark +45 43 20 08 57
Egypt +20 2 23938151
Finland, Latvia, Lithuania, Estonia +358 (9) 521 52 53
France +33 (0) 1 47 91 64 00
Germany, Austria, Switzerland +49 (0) 6103 313887
Greece +30 210 96 92 300
Hungary +36 (1) 382 60 60
India +91 1860 425 1860
Indonesia +65 6277 7284
Iran (Vida) +98 21 2271463
(Panasonic Office) +98 2188791102
Italy +39 02 6788 367
Jordan +962 6 5859801
Kazakhstan +7 727 298 0891
Korea +82 2 2106 6641

Kuwait +96 522431385
Lebanon +96 11665557
Malaysia +60 3 7809 7888
Mexico +52 55 5488 1000
Mongolia +976 70115577
Netherlands, Belgium +31 73 640 2729
New Zealand +64 9 272 0100
Norway +47 67 91 78 00
Pakistan +92 21 111 567 111
Palestine +972 2 2988750
Panama +507 229 2955
Philippines +65 6277 7284
Poland +48 (22) 338 1100
Portugal +351 21 425 77 04
Romania, Albania, Bulgaria, Macedonia +40 (0) 729 164 387
Russia & CIS +7 495 9804206
Saudi Arabia +966 (1) 4790499
Singapore +65 6277 7284
Slovak Republic, Croatia, Serbia, Bosnia, Montenegro, Slovenia +421 (0) 903 447 757
South Africa +27 11 3131622
Spain +34 (93) 425 93 00

Sweden +46 (8) 680 26 41
Taiwan +886 2 2227 6214
Thailand +662 731 8888
Turkey +90 216 578 3700
U.A.E. (for All Middle East) +971 4 8862142
Ukraine +380 44 4903437
U.K. +44(0)1344 70 69 13
U.S.A. +1 877 803 8492
Vietnam +65 6277 7284



Factories of AVC Networks Company have received ISO14001:2004-the Environmental Management System certification. (Except for 3rd party's peripherals.)