

S-1071H+

7" SDI/HDMI On-camera LCD Monitor

SWIT®



■ Features

- ◆ 7-inch FFS LCD Panel with LED backlight
- ◆ 1024 × 600, 900:1 contrast, H/V 160° viewing
- ◆ 2K/3G/HD/SD-SDI, HDMI, CVBS monitoring
- ◆ 2-ch SDI/HDMI/analog audio meters
- ◆ AFD, H/V delay, R/G/B/Mono, False color
- ◆ Zebra stripes, Peaking focus assist
- ◆ SDI timecode display
- ◆ Marker 4:3, 13:9, 14:9, 15:9, 1.85:1, 2.35:1
- ◆ GPI / TALLY input and control
- ◆ Front / Rear TALLY light
- ◆ V-mount, Gold mount or snap-on DV mount
- ◆ USB firmware upgrade



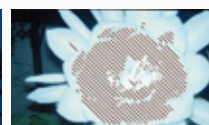
2-ch audio bar



Red/Blue Peaking focus assist



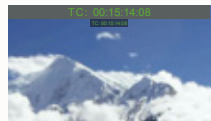
R/G/B/Mono only mode



Over exposure zebra stripes



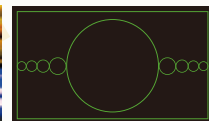
False color with color chart



Timecode (LTC, VITC1&2)



H/V delay



Active Format Description (AFD)



4:3, 13:9, 14:9, 15:9, 1.85:1, 2.35:1

■ Package includes

Simple package includes



Luxury package has additional



■ Specification

LCD Performance		
Size	7 inches	
Display area	153.6 × 90 mm	
Resolution	1024 × 600	
Aspect ratio	16:9 (4:3 adjustable)	
Brightness	400 cd/m ²	
Contrast	900:1	
Color	16.77 million colors	
Viewing Angle	H/V:160° / 160°	
Input/output		
Input	BNC × 1	2K/3G/HD/SD—SDI input
	BNC × 1	Composite input
	HDMI × 1	HDMI 1.3 input
	RCA × 2	Analog audio L/R input
Output	BNC × 1	2K/3G/HD/SD—SDI loop output
	BNC × 1	Composite loop output
	HDMI × 1	HDMI 1.3 loop output
	3.5mm × 1	SDI, HDMI, Analog audio output
Video Format		
SDI	SMPTE-2048-2	2048 × 1080p (23.98 / 24 / 25 / 29.97 / 30 / 50 / 59.94 / 60)
		2048 × 1080i (50 / 59.94 / 60)
	SMPTE-425M-A/B	1080p (60 / 59.94 / 50)
	SMPTE-274M	1080i (60 / 59.94 / 50)
		1080p (30 / 29.97 / 25 / 24 / 23.98)
	SMPTE-RP211	1080psf (30 / 29.97 / 25 / 24 / 23.98)
	SMPTE-296M	720p (60 / 59.94 / 50)
HDMI	SMPTE-125M	480i (59.94)
	ITU-R BT.656	576i (50)
		480i / 576i / 480p / 576p
		1080i (60 / 59.94 / 50)
		720p (60 / 59.94 / 50)
		1080p (60 / 59.94 / 50 / 30 / 29.97 / 25 / 24 / 23.98)
		1080psf (30 / 29.97 / 25 / 24 / 23.98)
CVBS	NTSC / PAL	
General		
Working voltage	DC / battery 6.5V-17V	
Power consumption	≤ 10W	
Working temperature	0° C ~ +40° C	
Working humidity	10% ~ 90%	
Storage temperature	-15° C ~ +60° C	
Storage humidity	10% ~ 90%	
Dimensions	192 × 139.5 × 47.3mm	
Net weight (main body)	550g	

SWIT Electronics Co., Ltd.

Tel: +86-25-85805753 Fax: +86-25-85805296

Email: contact@swit.cc <http://www.swit.cc>