

# V-800HD

Multi-Format Video Switcher

## Eight Multi-Format Channels with Independent Scalers A Variety of Output Formats including a Built-in Multiviewer

3G bps  
1080/60p

MULTI-FORMAT

HDCP

V-LINK

MIDI  
VISUAL  
CONTROL

### SCALING

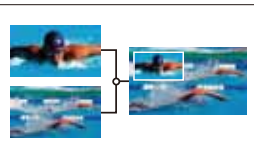
#### ●Scaling Sample

USB  
MEMORY64 (8 x 8)  
Memory Presets

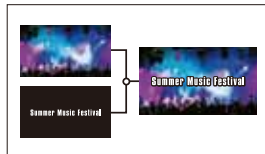
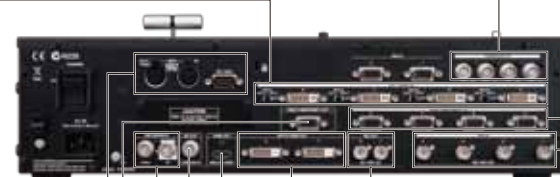
10 channels of PGM/PST

VIDEO FADER  
TRANSITIONPinP/KEY/  
DSK (Down Stream Keyer)

#### ●PinP (Picture in Picture)



#### ●DSK (Downstream Keyer)

DVI-I/HDMI Input  
Up to WUXGA, 1080pSDI Input  
Up to 1080pCOMPOSITE Input  
480i or 576iRGB/COMPONENT Input  
Up to WUXGA, 1080pRGB/COMPONENT  
Output  
Up to WUXGA, 1080pSD  
Output  
480i or 576iSDI Output  
Up to 1080pMIDI/RS-232C  
ConnectorsREFERENCE  
ConnectorsMultiviewer Output  
1080/60p with HDCPDVI-D/HDMI  
Output  
Up to WUXGA,  
1080p

\* Use an HDMI monitor that supports HDCP and 60p signals.

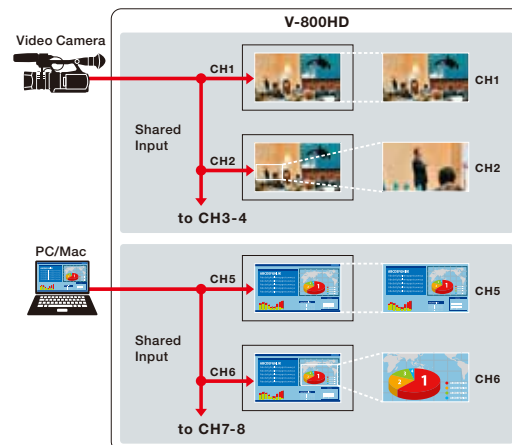
\* SDI and composite inputs are displayed at the original source frame rate.

\* DVI-I/HDMI and RGB/Component inputs are displayed using a reduced frame rate.

- 8 Input (4 SDI/Composite + 4 DVI-I/HDMI/RGB/Component), 6 Output (2 SDI + 2 DVI-D/HDMI + RGB/Component + Composite)
- 4:4:4/10-bit Internal Processing
- 1 M/E (Key, PinP) + DSK
- Built-in frame synchronizers and scalers on all inputs
- SDI support: 3G (Level A and B), HD, and SD
- DVI-D/RGB/HDMI support
- Input status LEDs
- HDCP support
- Live access to two still-image sources
- 10 assignable cross-points
- Multiviewer monitor output (Switch between Y/Cr/Cb and RGB modes)

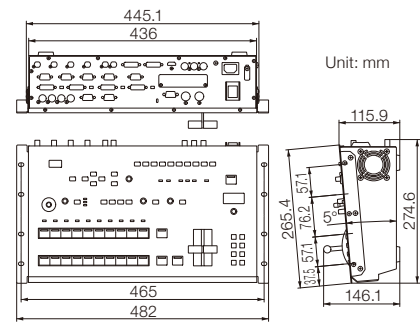
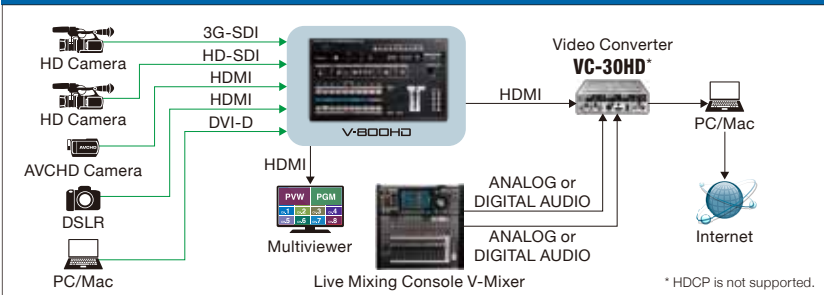
### Multi-Zoom

Using the shared input function, you can assign the video on channel 1 to channels 2 through 4 and the video on channel 5 to channels 6 through 8. The scaler for each input can zoom into any position in the video image enabling a virtual multi-camera environment. This gives the appearance that you have additional cameras connected.



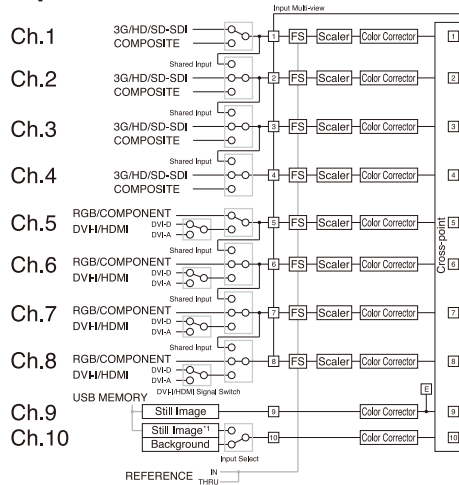
\* Only the source of the previous adjacent channel can be shared.

## V-800HD with Live Mixing Console and Video Converter



## Block Diagram

### Input



### Output

\*1 These functions can not be used at the same time.  
\*2 In HDCP mode, no video signals are output from the analog or SDI connectors.

## SPECIFICATIONS V-800HD

| Video Processing                 |                                                                                                                                                                                                                                                                                                                                                                                                                                                                                                                                                                                                                                                                                                                                                                                                                                                                                                                            |
|----------------------------------|----------------------------------------------------------------------------------------------------------------------------------------------------------------------------------------------------------------------------------------------------------------------------------------------------------------------------------------------------------------------------------------------------------------------------------------------------------------------------------------------------------------------------------------------------------------------------------------------------------------------------------------------------------------------------------------------------------------------------------------------------------------------------------------------------------------------------------------------------------------------------------------------------------------------------|
| Processing                       | 4:4:4 (Y/Pb/Pr, RGB), 10-bit                                                                                                                                                                                                                                                                                                                                                                                                                                                                                                                                                                                                                                                                                                                                                                                                                                                                                               |
| Supported Formats                | <b>Video:</b> 480/59.94i, 576/50i, 480/59.94p, 576/50p, 720/59.94p, 720/50p, 1080/59.94i, 1080/50i, 1080/59.94p, 1080/50p<br>* The SDI input can input the same frame rate as a setup menu setting.<br><b>PC:</b> 640 x 480/60 Hz*1, 800 x 600/60 Hz*1 *3, 1024 x 768/60 Hz*1, 1280 x 768/60 Hz*1, 1280 x 1024/60 Hz*1, 1366 x 768/60 Hz*1, 1400 x 1050/60 Hz*1, 1600 x 1200/60 Hz, 1920 x 1080/60 Hz, 1920 x 1200/60 Hz*2<br>* Conforms to VESA DMT Version 1.0 Revision 10<br>*1 Output refresh rate is 75 Hz when frame rate is set to 50 Hz<br>*2 Reduced blanking<br>*3 When Reference is set to External, the resolution of 800 x 600 and refresh rate of 60 Hz are no longer compliant with the VESA standard.<br>This means that display on some devices may not be possible in this situation.<br><b>Still Image:</b> Windows® Bitmap File (.bmp)<br>* Maximum 1900 x 1200 pixels, 24-bit per pixel, uncompressed |
|                                  |                                                                                                                                                                                                                                                                                                                                                                                                                                                                                                                                                                                                                                                                                                                                                                                                                                                                                                                            |
|                                  |                                                                                                                                                                                                                                                                                                                                                                                                                                                                                                                                                                                                                                                                                                                                                                                                                                                                                                                            |
|                                  |                                                                                                                                                                                                                                                                                                                                                                                                                                                                                                                                                                                                                                                                                                                                                                                                                                                                                                                            |
|                                  |                                                                                                                                                                                                                                                                                                                                                                                                                                                                                                                                                                                                                                                                                                                                                                                                                                                                                                                            |
| Input/Output Level and Impedance |                                                                                                                                                                                                                                                                                                                                                                                                                                                                                                                                                                                                                                                                                                                                                                                                                                                                                                                            |
| Composite                        | 1.0 Vp-p, 75 ohms                                                                                                                                                                                                                                                                                                                                                                                                                                                                                                                                                                                                                                                                                                                                                                                                                                                                                                          |
| Analog HD/RGB                    | 0.7 Vp-p, 75 ohms (H, V: 5 VTTL)                                                                                                                                                                                                                                                                                                                                                                                                                                                                                                                                                                                                                                                                                                                                                                                                                                                                                           |
| Input Connectors                 |                                                                                                                                                                                                                                                                                                                                                                                                                                                                                                                                                                                                                                                                                                                                                                                                                                                                                                                            |
| 3G/HD/SD-SDI                     | BNC type x 4<br>* Conforms to SMPTE 424M (Level-A), 292M, 259M-C                                                                                                                                                                                                                                                                                                                                                                                                                                                                                                                                                                                                                                                                                                                                                                                                                                                           |
| DVI-I/HDMI                       | DVI-I type x 4<br>* Select DVI-A or DVI-D/HDMI using switch per channel                                                                                                                                                                                                                                                                                                                                                                                                                                                                                                                                                                                                                                                                                                                                                                                                                                                    |
| Analog Video                     | HD: Component (Mini D-Sub 15 pin type) x 4<br>* Combined use with Analog RGB<br>SD: Composite (BNC type) x 4<br>* Select Composite or SDI using menu per channel                                                                                                                                                                                                                                                                                                                                                                                                                                                                                                                                                                                                                                                                                                                                                           |
| Analog RGB                       | Mini D-Sub 15 pin type x 4<br>* Combined use with Analog Video (HD)<br>* Select DVI-D/HDMI or Analog RGB using menu per channel                                                                                                                                                                                                                                                                                                                                                                                                                                                                                                                                                                                                                                                                                                                                                                                            |

| Output Connectors |                                                                                                                                                          |
|-------------------|----------------------------------------------------------------------------------------------------------------------------------------------------------|
| 3G/HD/SD-SDI      | BNC type x 2<br>* Conforms to SMPTE 424M (Level-A), 292M, 259M-C                                                                                         |
| DVI-D/HDMI        | DVI-D type x 2, HDMI x 1 (for multi-view monitor)                                                                                                        |
| Analog Video      | HD: Component (Mini D-Sub 15 pin type) x 1<br>* Combined use with Analog RGB<br>SD: Composite (BNC type) x 1                                             |
| Analog RGB        | Mini D-Sub 15-pin type x 1<br>* Combined use with Analog Video (HD)                                                                                      |
| Other Connectors  |                                                                                                                                                          |
| Tally             | Mini D-Sub 15 pin type x 2<br>* Input (max): 12V, 200 mA Open collector Type                                                                             |
| Reference         | BNC type (IN, THRU)<br>* Black Burst (Sync to frames), Bi-Level, Tri-Level                                                                               |
| MIDI              | 5 pin DIN type (IN, OUT/THRU)                                                                                                                            |
| RS-232C           | D-Sub 9 pin type x 1                                                                                                                                     |
| USB port (host)   | A type x 1 (for USB memory)                                                                                                                              |
| Effects           |                                                                                                                                                          |
| Transition        | Mix, Cut, Wipe (9 patterns)                                                                                                                              |
| Composition       | PinP, DSK, Chrominance Key, Luminance Key, External Key                                                                                                  |
| Others            | Output Fade, Output Freeze                                                                                                                               |
| Others            |                                                                                                                                                          |
| Power Consumption | 75 W                                                                                                                                                     |
| Power Supply      | AC 115 V, AC 117 V, AC 220 V, AC 230 V, AC 240 V (50/60 Hz)                                                                                              |
| Dimensions        | 482 (W) x 274.6 (D) x 115.9 (H) mm<br>19 (W) x 10-13/16 (D) x 4-9/16 (H) inches<br>* When rack mount brackets are attached.<br>* EIA-6U rack mount size. |
| Weight            | 5.5 kg<br>12 lbs 3 oz                                                                                                                                    |
| Accessories       | Power Cord, Rack Mount Angle (2), Input Template, Owner's Manual                                                                                         |

\* This product is a Class A digital device under FCC part 15.